



Get Active with GetSet Travel to Tokyo click link below to log any exercise you have been doing at home.

<https://www.getset.co.uk/travel-tokyo>



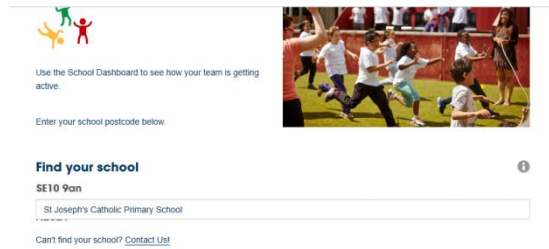
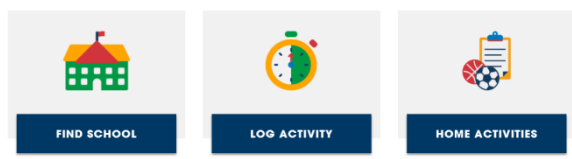
Once you have clicked on the link this page will appear.

**GET YOUR FAMILY INVOLVED**

Your school team is waiting for you to join in the fun. Get active and beat your goals together.

[How does it work?](#)

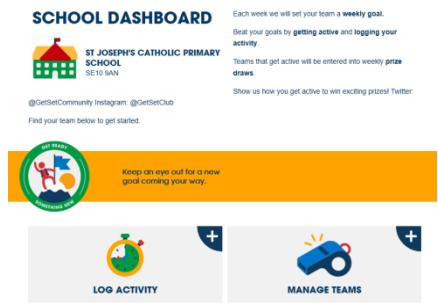
Scroll down and click on “find school”



Enter the school’s postcode into the “Find your school” box. The school postcode is SE10 9AN

As you type a list of schools should appear click, on St Joseph’s Catholic Primary School. Then “SUBMIT”

On the school dashboard page click “Log Activity”



## LOG ACTIVITY

Are you back from the playground? Have you just had a swimming lesson? Log your activity here to help your team on their journey to Tokyo. You will need to know your school postcode and your team name to log activity.

SE10 9AN

St Joseph's Catholic Primary School

Select Team

TEAM YEAR 6  
TEAM YEAR 5  
TEAM YEAR 4  
TEAM YEAR 3  
TEAM YEAR 2  
TEAM YEAR 1  
TEAM RECEPTION  
SCHOOL TEAM

Click on the "Select Team" dropdown box and click on your team.

Scroll down the page and answer the following questions:

- What activity did you do?
- Did you enjoy it?
- How long did it take?
- How hard did you work?
- How many family members took part?

Parents/carers you can also fill in your contact details for a chance to win prizes

**PARENTS, GET ACTIVE WITH YOUR CHILDREN AND START WINNING PRIZES!**

To help you keep active, sign up to our weekly newsletter to receive goal reminders and activity ideas, get inspiration from other teams, be entered into prize draws and more.

We'll be awarding prizes to active schools and their families. By signing up for the newsletter, if your school wins, you could too!

Insert name  Insert surname

Insert email

By signing up, I confirm that I'm over 16.  
To find out what personal data we collect and how we use it, please visit our [Privacy Policy](#).

SUBMIT

If you have any problems/queries please email Miss Dingley at [eyfs@stjosephs.greenwich.sch.uk](mailto:eyfs@stjosephs.greenwich.sch.uk)

